

**ITCHEN VALLEY DISUSED RAILWAY
BRIDGETTS LANE, COUCH GREEN, ITCHEN ABBAS
9TH OCTOBER, 2005**



**Worthys
Conservation
Volunteers**



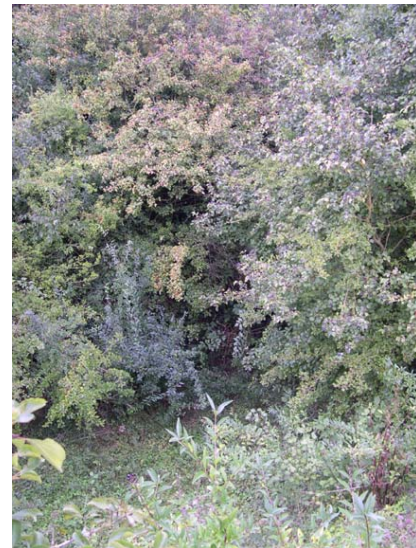
1. Path westwards.



2. Bridge at Bridgetts Lane.



3. Thicket to dense a little after bridge.



4. View from top of embankment.